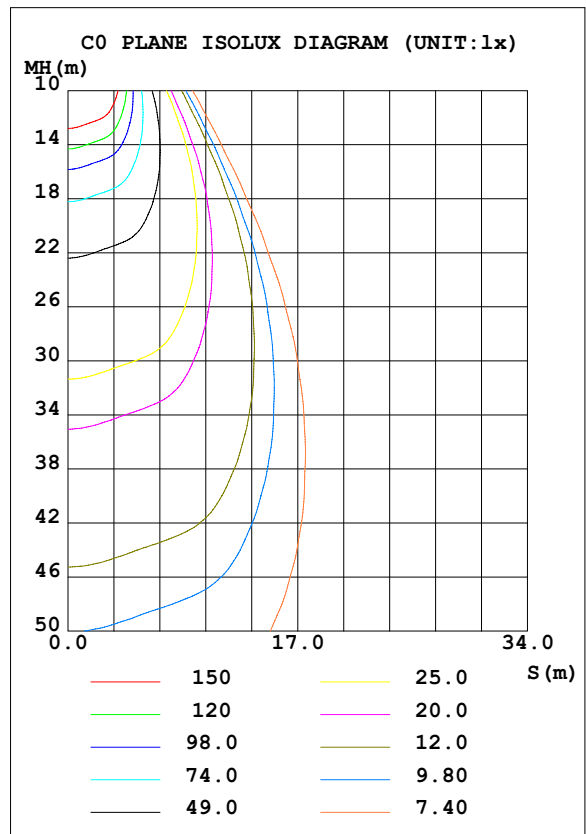
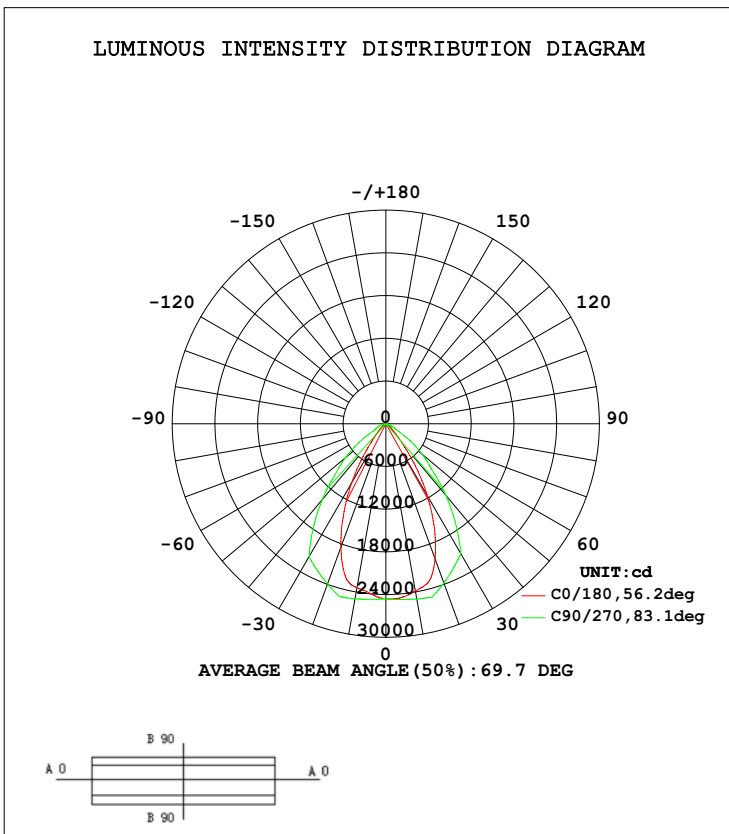


LUMINAIRE PHOTOMETRIC TEST REPORT

Test:U:223.3V I:2.211A P:487.0W PF:0.9850 Lamp Flux:32423.5x1 lm		
NAME:TOWER CHANDELIER LIGHT	TYPE:OUTDOOR	WEIGHT:15
SPEC.:TI-GO3S-FL500W	DIM.:	SERIAL No.:
MFR.: TOMOMORI CO.,LTD	SUR.:	PROTECTION ANGLE:

DATA OF LAMP		PHOTOMETRIC DATA Eff: 66.58 lm/W			
MODEL	BRIDEGLUX 6500K	Imax (cd)	25241	S/MH (C0/180)	0.88
NOMINAL POWER (W)	500	LOR (%)	100.0	S/MH (C90/270)	1.17
RATED VOLTAGE (V)	220	TOTAL FLUX (lm)	32424	η UP, DN (C0-180)	0.0, 50.5
NOMINAL FLUX (lm)	32423.5	CIE CLASS	DIRECT	η UP, DN (C180-360)	0.0, 49.5
LAMPS INSIDE	1	η up (%)	0.0	CIBSE SHR NOM	1.00
TEST VOLTAGE (V)	220.1	η down (%)	100.0	CIBSE SHR MAX	1.05



C Range: 0 - 360DEG
 C Interval: 5.0DEG
 Test Speed: HIGH
 Temperature:25.3DEG
 Operators:
 Test Date:2015-06-18

γ Range: 0 - 90DEG
 γ Interval: 0.5DEG
 Test System:EVERFINE GO-2000B_V1 SYSTEM V2.0.287
 Humidity:65.0%
 Test Distance:8.000m [K=1.0000]
 Remarks:

ZONAL FLUX DIAGRAM

ZONAL FLUX DIAGRAM:

γ	C0	C45	C90	C135	C180	C225	C270	C315	γ	Φone	Φtotal	%lum, lamp
5	2399	2443	2477	2474	2452	2475	2478	2443	0- 5	588.1	588.1	1.81,1.81
10	2338	2415	2496	2469	2387	2473	2499	2415	5- 10	1750	2338	7.21,7.21
15	2211	2391	2515	2448	2303	2457	2519	2396	10- 15	2878	5217	16.1,16.1
20	1848	2282	2396	2397	2018	2402	2381	2293	15- 20	3839	9056	27.9,27.9
25	1409	1931	2277	2109	1613	2105	2243	1924	20- 25	4387	13443	41.5,41.5
30	971.1	1520	2158	1710	1165	1692	2104	1494	25- 30	4500	17943	55.3,55.3
35	557.0	1121	1774	1295	723.7	1269	1708	1079	30- 35	4166	22109	68.2,68.2
40	270.0	759.7	1391	894.5	363.0	878.3	1312	706.6	35- 40	3383	25492	78.6,78.6
45	142.1	454.1	1007	536.5	175.4	536.1	915.2	406.9	40- 45	2474	27966	86.3,86.3
50	84.56	250.5	735.6	285.3	97.89	292.0	664.8	214.8	45- 50	1688	29654	91.5,91.5
55	53.29	134.5	464.4	140.4	60.12	147.4	414.3	109.1	50- 55	1141	30795	95,95
60	35.80	85.18	193.3	87.94	40.00	92.34	163.8	69.37	55- 60	701.5	31496	97.1,97.1
65	25.22	52.64	140.8	53.75	28.42	55.76	119.4	43.04	60- 65	390.0	31886	98.3,98.3
70	18.25	33.87	88.31	34.05	20.81	34.78	75.04	27.30	65- 70	266.9	32153	99.2,99.2
75	12.41	23.34	35.80	22.94	14.90	23.79	30.66	17.85	70- 75	171.1	32324	99.7,99.7
80	6.756	12.39	0	11.70	9.149	12.35	0	8.435	75- 80	82.11	32407	99.9,99.9
85	1.350	0	0	0	3.577	0	0	0	80- 85	16.15	32423	100,100
90	0.0783	0	0	0	0.1286	0	0	0	85- 90	0.8656	32424	100,100
95									90- 95			
100									95-100			
105									100-105			
110									105-110			
115									110-115			
120									115-120			
125									120-125			
130									125-130			
135									130-135			
140									135-140			
145									140-145			
150									145-150			
155									150-155			
160									155-160			
165									160-165			
170									165-170			
175									170-175			
180									175-180			
DEG	LUMINOUS INTENSITY: ?0cd									UNIT: lm		

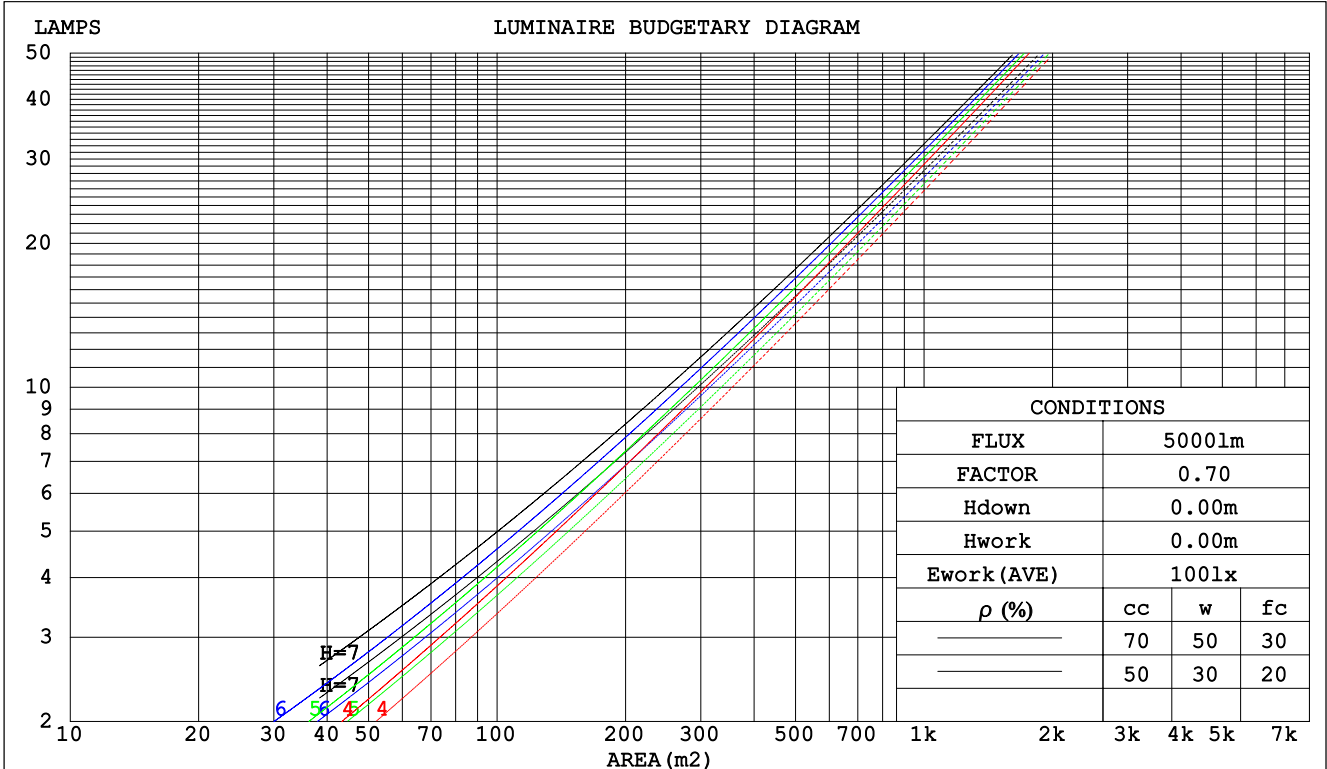
C Range: 0 - 360DEG
 C Interval: 5.0DEG
 Test Speed: HIGH
 Temperature:25.3DEG
 Operators:
 Test Date:2015-06-18

γ Range: 0 - 90DEG
 γ Interval: 0.5DEG
 Test System:EVERFINE GO-2000B_V1 SYSTEM V2.0.287
 Humidity:65.0%
 Test Distance:8.000m [K=1.0000]
 Remarks:

CU AND LUMINAIRE BUDGETARY ESTIMATE DIAGRAM

Test:U:223.3V I:2.211A P:487.0W PF:0.9850 Lamp Flux:32423.5x1 lm		
NAME:TOWER CHANDELIER LIGHT	TYPE:OUTDOOR	WEIGHT:15
SPEC.:TI-GO3S-FL500W	DIM.:	SERIAL No.:
MFR.: TOMOMORI CO.,LTD	SUR.:	PROTECTION ANGLE:

ρ_{cc}	80%			70%			50%			30%			10%			0
ρ_w	50%	30%	10%	50%	30%	10%	50%	30%	10%	50%	30%	10%	50%	30%	10%	0
ρ_{fc}	20%			20%			20%			20%			20%			0
RCR	RCR:Room Cavity Ratio															
	Coefficients of Utilization(CU)															
0.0	1.19	1.19	1.19	1.16	1.16	1.16	1.11	1.11	1.11	1.06	1.06	1.06	1.02	1.02	1.02	1.00
1.0	1.09	1.07	1.04	1.07	1.05	1.02	1.03	1.01	.99	.99	.98	.96	.96	.95	.93	.92
2.0	1.00	.95	.92	.98	.94	.91	.95	.92	.89	.92	.89	.87	.89	.87	.85	.83
3.0	.92	.86	.82	.90	.85	.81	.88	.83	.80	.85	.81	.78	.83	.80	.77	.75
4.0	.85	.78	.73	.83	.77	.73	.81	.76	.72	.79	.75	.71	.77	.73	.70	.69
5.0	.78	.71	.66	.77	.71	.66	.75	.70	.65	.73	.69	.65	.72	.68	.64	.63
6.0	.72	.65	.60	.71	.65	.60	.70	.64	.60	.68	.63	.59	.67	.62	.59	.57
7.0	.67	.60	.55	.66	.60	.55	.65	.59	.55	.64	.59	.55	.63	.58	.54	.53
8.0	.63	.56	.51	.62	.55	.51	.61	.55	.51	.60	.54	.50	.59	.54	.50	.49
9.0	.58	.52	.47	.58	.52	.47	.57	.51	.47	.56	.51	.47	.55	.50	.47	.45
10.0	.55	.48	.44	.54	.48	.44	.53	.48	.44	.53	.47	.44	.52	.47	.43	.42



C Range: 0 - 360DEG
 C Interval: 5.0DEG
 Test Speed: HIGH
 Temperature:25.3DEG
 Operators:
 Test Date:2015-06-18

γ Range: 0 - 90DEG
 γ Interval: 0.5DEG
 Test System:EVERFINE GO-2000B_V1 SYSTEM V2.0.287
 Humidity:65.0%
 Test Distance:8.000m [K=1.0000]
 Remarks:

WEC AND CCEC

Test:U:223.3V I:2.211A P:487.0W PF:0.9850 Lamp Flux:32423.5x1 lm														
NAME:TOWER CHANDELIER LIGHT						OUTDOOR						WEIGHT:15		
SPEC.:TI-GO3S-FL500W						DIM.:						SERIAL No.:		
MFR.: TOMOMORI CO.,LTD						SUR.:						PROTECTION ANGLE:		

ρ_{cc}	80%			70%			50%			30%			10%			0
ρ_w	50%	30%	10%	50%	30%	10%	50%	30%	10%	50%	30%	10%	50%	30%	10%	0
ρ_{fc}	20%			20%			20%			20%			20%			0
RCR	RCR:Room Cavity Ratio						Wall Exitance Coefficients(WEC)									
0.0																
1.0	.205	.116	.037	.198	.113	.036	.185	.106	.034	.173	.100	.032	.162	.094	.030	
2.0	.198	.109	.033	.193	.106	.033	.182	.101	.031	.172	.096	.030	.163	.092	.029	
3.0	.190	.101	.030	.185	.099	.030	.175	.095	.029	.167	.091	.028	.159	.088	.027	
4.0	.180	.094	.028	.176	.092	.027	.168	.089	.027	.160	.086	.026	.153	.083	.025	
5.0	.171	.087	.025	.168	.086	.025	.160	.083	.025	.154	.081	.024	.147	.079	.024	
6.0	.163	.082	.023	.159	.081	.023	.153	.078	.023	.147	.076	.022	.142	.075	.022	
7.0	.155	.077	.022	.152	.076	.022	.146	.074	.021	.141	.072	.021	.136	.071	.021	
8.0	.147	.072	.020	.145	.071	.020	.140	.070	.020	.135	.068	.020	.130	.067	.019	
9.0	.140	.068	.019	.138	.067	.019	.134	.066	.019	.129	.065	.019	.125	.064	.018	
10.0	.134	.064	.018	.132	.064	.018	.128	.063	.018	.124	.062	.017	.120	.060	.017	

ρ_{cc}	80%			70%			50%			30%			10%			0
ρ_w	50%	30%	10%	50%	30%	10%	50%	30%	10%	50%	30%	10%	50%	30%	10%	0
ρ_{fc}	20%			20%			20%			20%			20%			0
RCR	RCR:Room Cavity Ratio						Ceiling Cavity Exitance Coefficients(CCEC)									
0.0	.190	.190	.190	.163	.163	.163	.111	.111	.111	.064	.064	.064	.020	.020	.020	
1.0	.173	.157	.143	.148	.135	.123	.101	.093	.085	.058	.054	.049	.019	.017	.016	
2.0	.160	.132	.109	.137	.114	.094	.094	.079	.066	.054	.046	.039	.017	.015	.013	
3.0	.149	.114	.086	.128	.098	.074	.088	.068	.052	.051	.040	.031	.016	.013	.010	
4.0	.140	.099	.069	.120	.086	.060	.083	.060	.042	.048	.035	.025	.015	.011	.008	
5.0	.132	.088	.056	.113	.076	.049	.078	.053	.034	.045	.031	.020	.015	.010	.007	
6.0	.125	.079	.046	.107	.069	.040	.074	.048	.029	.043	.028	.017	.014	.009	.006	
7.0	.119	.072	.039	.102	.062	.034	.071	.044	.024	.041	.026	.014	.013	.008	.005	
8.0	.113	.066	.034	.097	.057	.029	.067	.040	.021	.039	.024	.012	.013	.008	.004	
9.0	.108	.061	.029	.093	.053	.025	.064	.037	.018	.038	.022	.011	.012	.007	.004	
10.0	.103	.057	.026	.089	.049	.022	.062	.035	.016	.036	.020	.009	.012	.007	.003	

C Range: 0 - 360DEG
 C Interval: 5.0DEG
 Test Speed: HIGH
 Temperature:25.3DEG
 Operators:
 Test Date:2015-06-18

γ Range: 0 - 90DEG
 γ Interval: 0.5DEG
 Test System:EVERFINE GO-2000B_V1 SYSTEM V2.0.287
 Humidity:65.0%
 Test Distance:8.000m [K=1.0000]
 Remarks:

UGR(Unified Glare Rating) Table

Test:U:223.3V I:2.211A P:487.0W PF:0.9850 Lamp Flux:32423.5x1 lm										
NAME:TOWER CHANDELIER LIGHT					TYPE:OUTDOOR			WEIGHT:15		
SPEC.:TI-GO3S-FL500W					DIM.:			SERIAL No.:		
MFR.: TOMOMORI CO.,LTD					SUR.:			PROTECTION ANGLE:		
ceiling/cavity	0.7	0.7	0.5	0.5	0.3	0.7	0.7	0.5	0.5	0.3
walls	0.5	0.3	0.5	0.3	0.3	0.5	0.3	0.5	0.3	0.3
working plane	0.2	0.2	0.2	0.2	0.2	0.2	0.2	0.2	0.2	0.2
Room dimensions	Viewed crosswise					Viewed endwise				
x = 2H y = 2H	27.4	28.5	27.6	28.7	28.8	35.2	36.3	35.4	36.5	36.7
3H	27.3	28.3	27.6	28.6	28.8	35.3	36.3	35.6	36.5	36.7
4H	27.3	28.3	27.6	28.5	28.7	35.3	36.3	35.6	36.5	36.7
6H	27.3	28.2	27.6	28.4	28.7	35.2	36.1	35.5	36.4	36.6
8H	27.2	28.1	27.6	28.4	28.6	35.2	36.0	35.5	36.3	36.6
12H	27.2	28.0	27.5	28.3	28.6	35.1	35.9	35.4	36.2	36.5
4H 2H	27.7	28.7	28.0	28.9	29.1	35.0	35.9	35.2	36.1	36.4
3H	27.7	28.6	28.1	28.8	29.1	35.1	36.0	35.4	36.2	36.5
4H	27.8	28.5	28.1	28.8	29.1	35.1	35.9	35.5	36.2	36.5
6H	27.7	28.4	28.1	28.7	29.1	35.1	35.7	35.4	36.1	36.4
8H	27.7	28.3	28.1	28.7	29.1	35.0	35.6	35.4	36.0	36.3
12H	27.7	28.2	28.1	28.6	29.0	35.0	35.5	35.4	35.9	36.3
8H 4H	27.8	28.4	28.2	28.8	29.2	35.0	35.6	35.4	36.0	36.3
6H	27.9	28.4	28.3	28.8	29.2	34.9	35.4	35.4	35.8	36.3
8H	27.9	28.3	28.3	28.7	29.2	34.9	35.3	35.3	35.8	36.2
12H	27.8	28.2	28.3	28.7	29.1	34.8	35.2	35.3	35.7	36.1
12H 4H	27.8	28.4	28.2	28.7	29.1	35.0	35.5	35.4	35.9	36.3
6H	27.8	28.3	28.3	28.7	29.1	34.9	35.3	35.3	35.8	36.2
8H	27.8	28.2	28.3	28.7	29.1	34.8	35.2	35.3	35.7	36.1
Variations with the observer position at spacings:										
S = 1.0H	+ 1.9 / - 3.6					+ 1.4 / - 1.9				
1.5H	+ 2.4 / - 2.9					+ 2.2 / - 3.9				
2.0H	+ 2.1 / - 2.2					+ 4.1 / - 6.0				

CIE Pub.117 Corrected 32424 lm Total Lamp Luminous Flux. (8log(F/F0) = 12.1)

C Range: 0 - 360DEG
C Interval: 5.0DEG
Test Speed: HIGH
Temperature:25.3DEG
Operators:
Test Date:2015-06-18

γ Range: 0 - 90DEG
 γ Interval: 0.5DEG
Test System:EVERFINE GO-2000B_V1 SYSTEM V2.0.287
Humidity:65.0%
Test Distance:8.000m [K=1.0000]
Remarks:

UTILIZATION FACTORS TABLE

Test:U:223.3V I:2.211A P:487.0W PF:0.9850 Lamp Flux:32423.5x1 lm		
NAME:TOWER CHANDELIER LIGHT	TYPE:OUTDOOR	WEIGHT:15
SPEC.:TI-GO3S-FL500W	DIM.:	SERIAL No.:
MFR.: TOMOMORI CO.,LTD	SUR.:	PROTECTION ANGLE:

REFLECTANCE										
Ceiling	0.8	0.8	0.8	0.7	0.7	0.7	0.5	0.5	0.5	0
Walls	0.7	0.5	0.3	0.7	0.5	0.3	0.7	0.5	0.3	0
Working plane	0.2	0.2	0.2	0.2	0.2	0.2	0.2	0.2	0.2	0
ROOM INDEX	UTILIZATION FACTORS (PERCENT) $k(RI) \times RCR = 5$									
k = 0.60	78	70	65	77	70	65	76	69	65	60
0.80	87	79	74	86	79	74	85	78	74	69
1.00	93	86	81	92	85	81	90	86	80	76
1.25	98	92	87	97	91	87	95	90	86	81
1.50	102	96	91	100	95	91	98	93	90	85
2.00	106	100	96	104	99	96	101	97	94	88
2.50	108	103	99	106	102	98	103	99	97	90
3.00	110	106	102	108	104	101	104	101	99	92
4.00	112	109	106	110	107	104	106	104	102	94
5.00	113	111	108	111	109	107	107	105	104	96
ROOM INDEX	UF(total)									Direct
According to DIN EN 13032-2 2004			Suspended				SHRNOM = 1.25			

C Range: 0 - 360DEG
 C Interval: 5.0DEG
 Test Speed: HIGH
 Temperature:25.3DEG
 Operators:
 Test Date:2015-06-18

γ Range: 0 - 90DEG
 γ Interval: 0.5DEG
 Test System:EVERFINE GO-2000B_V1 SYSTEM V2.0.287
 Humidity:65.0%
 Test Distance:8.000m [K=1.0000]
 Remarks:

ISOCANDELA DIAGRAM

Test:U:223.3V I:2.211A P:487.0W PF:0.9850 Lamp Flux:32423.5x1 lm		
NAME:TOWER CHANDELIER LIGHT	TYPE:OUTDOOR	WEIGHT:15
SPEC.:TI-GO3S-FL500W	DIM.:	SERIAL No.:
MFR.: TOMOMORI CO.,LTD	SUR.:	PROTECTION ANGLE:

Conical surface Flux(90deg):

27966 lm

%lum = 86.3%

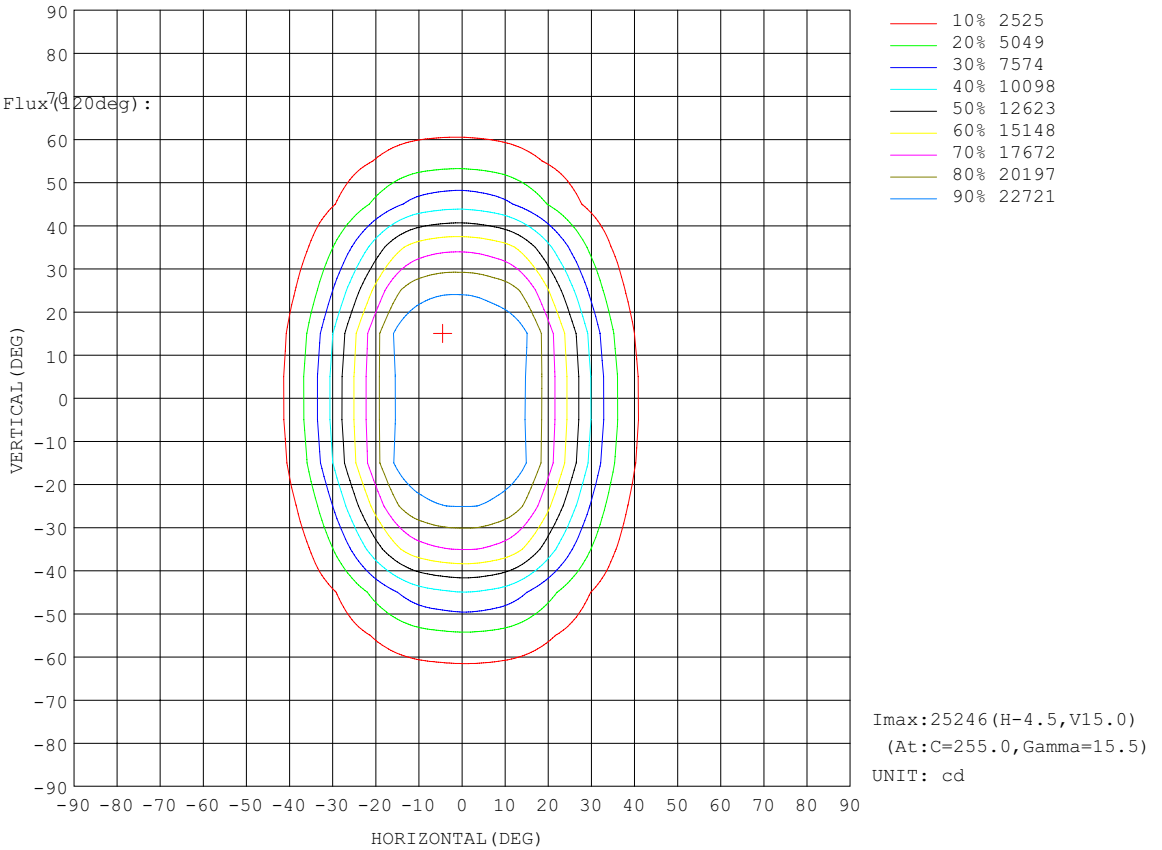
%lamp = 86.3%

Conical surface Flux(70deg):

31496 lm

%lum = 97.1%

%lamp = 97.1%

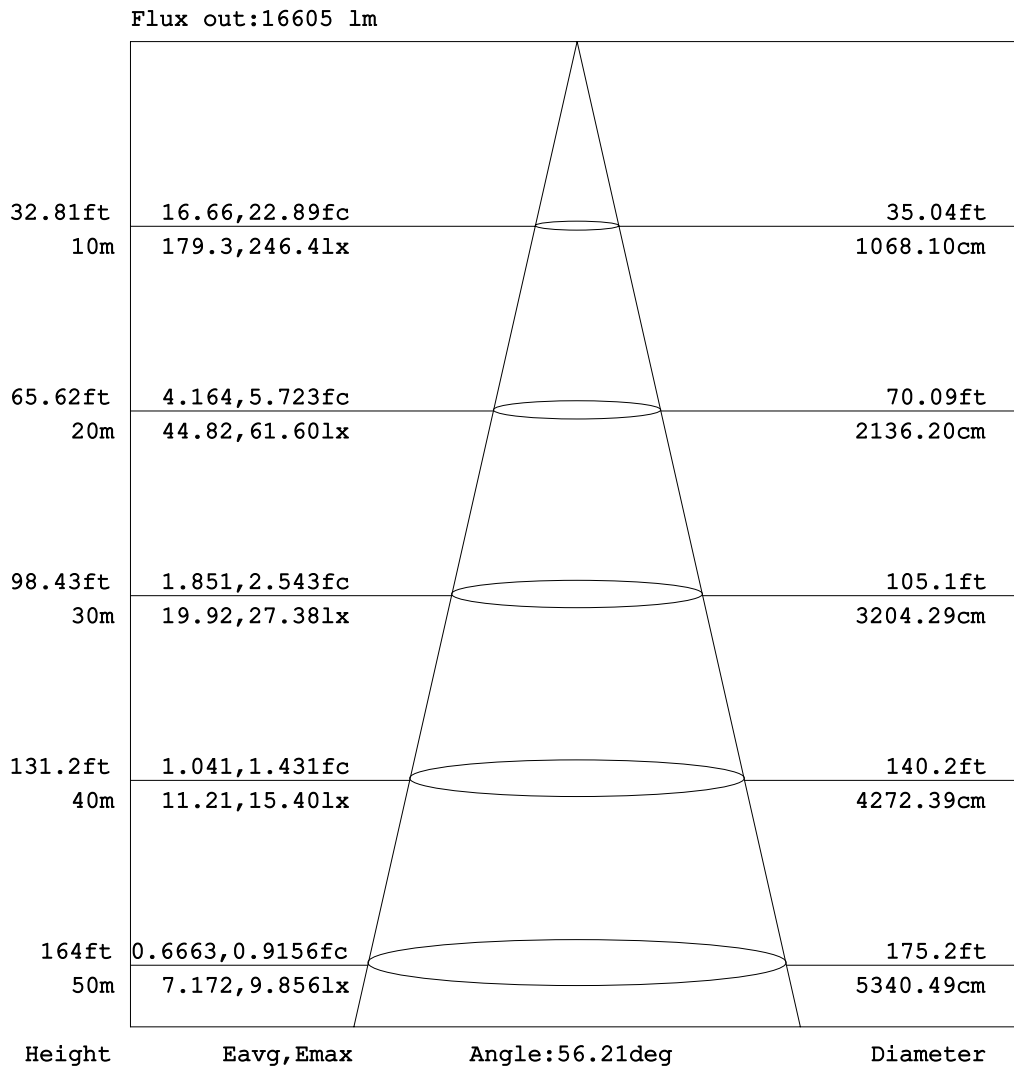


C Range: 0 - 360DEG
 C Interval: 5.0DEG
 Test Speed: HIGH
 Temperature:25.3DEG
 Operators:
 Test Date:2015-06-18

γ Range: 0 - 90DEG
 γ Interval: 0.5DEG
 Test System:EVERFINE GO-2000B_V1 SYSTEM V2.0.287
 Humidity:65.0%
 Test Distance:8.000m [K=1.0000]
 Remarks:

AAI Figure

Test:U:223.3V I:2.211A P:487.0W PF:0.9850 Lamp Flux:32423.5x1 lm		
NAME:TOWER CHANDELIER LIGHT	TYPE:OUTDOOR	WEIGHT:15
SPEC.:TI-GO3S-FL500W	DIM.:	SERIAL No.:
MFR.: TOMOMORI CO.,LTD	SUR.:	PROTECTION ANGLE:



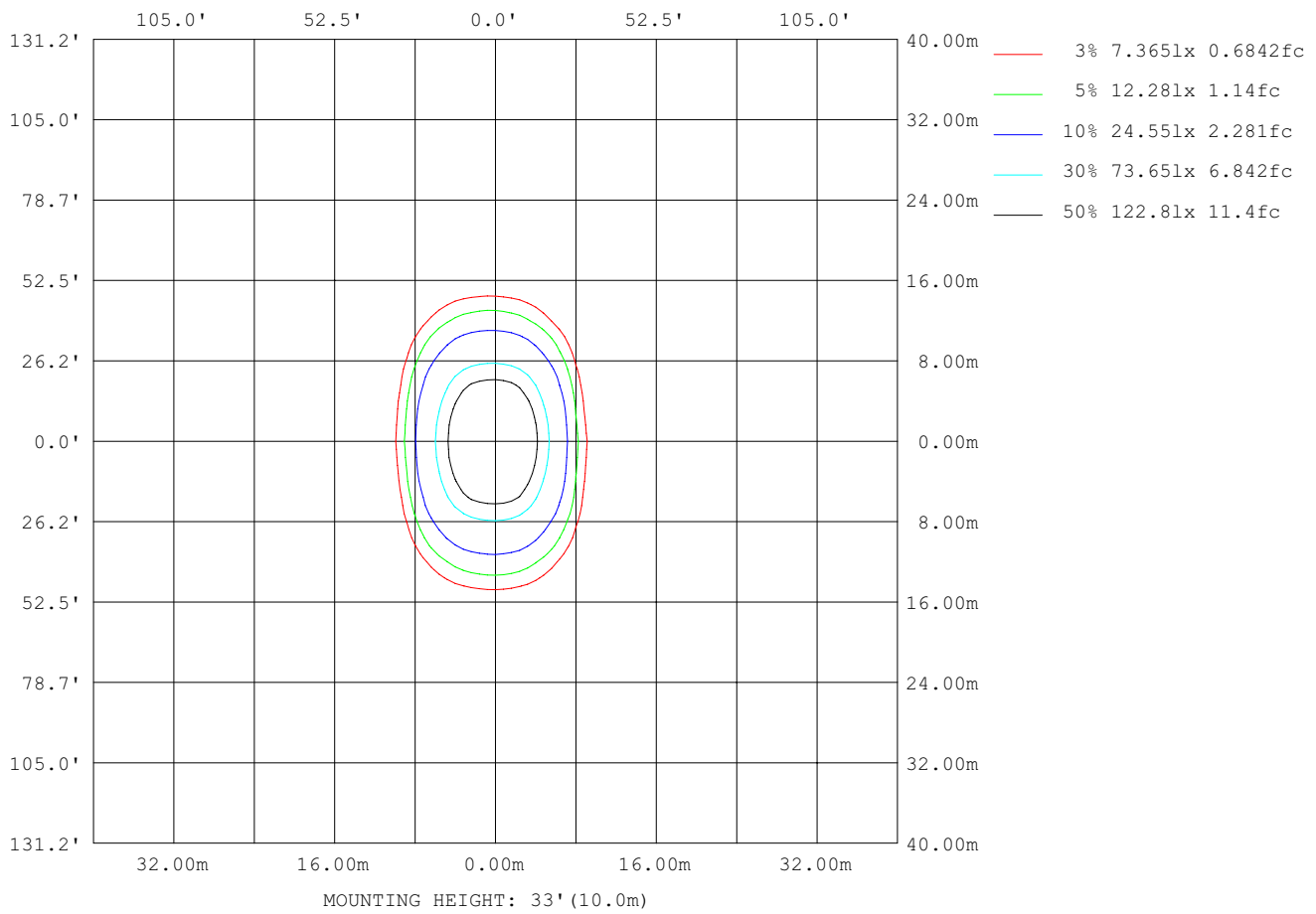
Note:The Curves indicate the illuminated area and the average illumination when the luminaire is at different distance.

C Range: 0 - 360DEG
 C Interval: 5.0DEG
 Test Speed: HIGH
 Temperature:25.3DEG
 Operators:
 Test Date:2015-06-18

γ Range: 0 - 90DEG
 γ Interval: 0.5DEG
 Test System:EVERFINE GO-2000B_V1 SYSTEM V2.0.287
 Humidity:65.0%
 Test Distance:8.000m [K=1.0000]
 Remarks:

ISOLUX DIAGRAM

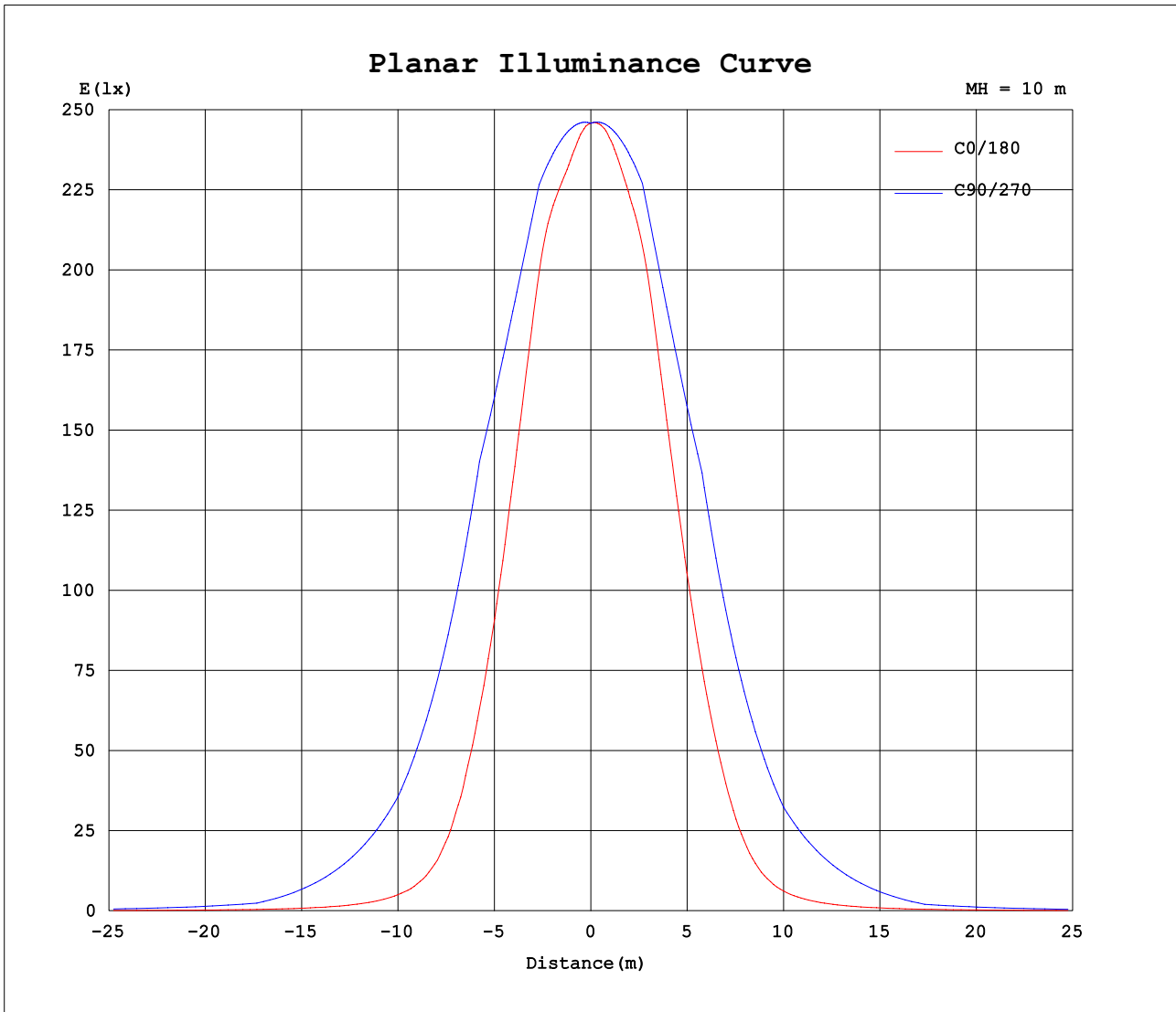
Test:U:223.3V I:2.211A P:487.0W PF:0.9850 Lamp Flux:32423.5x1 lm		
NAME:TOWER CHANDELIER LIGHT	TYPE:OUTDOOR	WEIGHT:15
SPEC.:TI-GO3S-FL500W	DIM.:	SERIAL No.:
MFR.: TOMOMORI CO.,LTD	SUR.:	PROTECTION ANGLE:



C Range: 0 - 360DEG
 C Interval: 5.0DEG
 Test Speed: HIGH
 Temperature:25.3DEG
 Operators:
 Test Date:2015-06-18

γ Range: 0 - 90DEG
 γ Interval: 0.5DEG
 Test System:EVERFINE GO-2000B_V1 SYSTEM V2.0.287
 Humidity:65.0%
 Test Distance:8.000m [K=1.0000]
 Remarks:

Planar Illuminance Curve



C Range: 0 - 360DEG
 C Interval: 5.0DEG
 Test Speed: HIGH
 Temperature:25.3DEG
 Operators:
 Test Date:2015-06-18

γ Range: 0 - 90DEG
 γ Interval: 0.5DEG
 Test System:EVERFINE GO-2000B_V1 SYSTEM V2.0.287
 Humidity:65.0%
 Test Distance:8.000m [K=1.0000]
 Remarks:

LUMINOUS DISTRIBUTION INTENSITY DATA

Test:U:223.3V I:2.211A P:487.0W PF:0.9850 Lamp Flux:32423.5x1 lm		
NAME:TOWER CHANDELIER LIGHT	TYPE:OUTDOOR	WEIGHT:15
SPEC.:TI-GO3S-FL500W	DIM.:	SERIAL No.:
MFR.: TOMOMORI CO.,LTD	SUR.:	PROTECTION ANGLE:

Table--1

UNIT: °cd

C (DEG) \ y (DEG)	0	5	10	15	20	25	30	35	40	45	50	55	60	65	70	75	80	85	90
0	2458	2458	2458	2458	2458	2458	2458	2458	2458	2458	2458	2458	2458	2458	2458	2458	2458	2458	2458
5	2399	2402	2405	2409	2414	2419	2424	2430	2437	2443	2449	2455	2459	2464	2468	2472	2474	2476	2477
10	2338	2343	2349	2357	2365	2374	2383	2393	2403	2415	2427	2440	2453	2464	2475	2484	2490	2493	2496
15	2211	2215	2225	2243	2264	2288	2317	2342	2367	2391	2411	2432	2451	2469	2486	2498	2508	2512	2515
20	1848	1849	1864	1893	1936	1988	2052	2125	2205	2282	2331	2350	2360	2369	2376	2385	2392	2395	2396
25	1409	1405	1420	1456	1512	1584	1674	1781	1854	1931	2017	2101	2165	2207	2231	2250	2267	2276	2277
30	971	963	977	1012	1075	1157	1241	1317	1411	1520	1643	1770	1898	2002	2071	2109	2139	2157	2158
35	557	550	563	601	667	738	808	895	1001	1121	1256	1415	1545	1655	1726	1755	1765	1774	1774
40	270	267	278	304	344	392	455	539	640	760	873	989	1109	1216	1304	1354	1371	1385	1391
45	142	141	147	160	176	201	239	293	366	454	547	642	733	817	894	952	979	995	1007
50	84.6	84.3	88.1	94.5	103	116	134	160	200	251	305	364	440	523	602	669	707	725	736
55	53.3	53.3	56.2	59.4	65.0	72.7	82.3	95.3	113	134	172	222	282	338	387	428	450	459	464
60	35.8	35.9	37.6	39.6	43.2	47.2	52.7	59.7	70.3	85.2	105	130	158	180	195	201	198	195	193
65	25.2	25.4	26.3	27.8	29.7	32.0	35.2	40.1	46.0	52.6	60.1	66.9	81.0	96.1	112	125	133	139	141
70	18.3	18.6	19.2	20.0	21.3	22.8	25.0	27.5	29.7	33.9	39.8	46.9	55.4	64.2	73.1	80.4	84.8	87.4	88.3
75	12.4	12.6	13.3	14.0	14.7	16.0	17.3	18.8	20.7	23.3	26.5	29.8	32.9	35.2	36.8	37.0	36.8	36.0	35.8
80	6.76	7.01	7.41	7.78	8.48	9.14	10.1	11.3	12.7	12.4	11.0	9.25	7.48	5.57	3.83	2.26	1.05	0.27	0.00
85	1.35	1.45	1.80	1.89	2.03	1.47	0.00	0.00	0.00	0.00	0.00	0.00	0.00	0.00	0.00	0.00	0.00	0.00	0.00
90	0.08	0.00	0.00	0.00	0.00	0.00	0.00	0.00	0.00	0.00	0.00	0.00	0.00	0.00	0.00	0.00	0.00	0.00	0.00

C Range: 0 - 360DEG
 C Interval: 5.0DEG
 Test Speed: HIGH
 Temperature:25.3DEG
 Operators:
 Test Date:2015-06-18

y Range: 0 - 90DEG
 y Interval: 0.5DEG
 Test System:EVERFINE GO-2000B_V1 SYSTEM V2.0.287
 Humidity:65.0%
 Test Distance:8.000m [K=1.0000]
 Remarks:

LUMINOUS DISTRIBUTION INTENSITY DATA

Test:U:223.3V I:2.211A P:487.0W PF:0.9850 Lamp Flux:32423.5x1 lm		
NAME:TOWER CHANDELIER LIGHT	TYPE:OUTDOOR	WEIGHT:15
SPEC.:TI-GO3S-FL500W	DIM.:	SERIAL No.:
MFR.: TOMOMORI CO.,LTD	SUR.:	PROTECTION ANGLE:

Table--2

UNIT: °cd

C (DEG) \ y (DEG)	95	100	105	110	115	120	125	130	135	140	145	150	155	160	165	170	175	180	185	
0	2458	2458	2458	2458	2458	2458	2458	2458	2458	2458	2458	2458	2458	2458	2458	2458	2458	2458	2458	
5	2478	2479	2480	2479	2479	2479	2477	2476	2474	2473	2470	2468	2466	2462	2460	2457	2454	2452	2454	
10	2498	2498	2498	2498	2496	2491	2485	2479	2469	2459	2449	2438	2428	2418	2409	2401	2393	2387	2394	
15	2516	2517	2518	2515	2510	2499	2484	2466	2448	2428	2408	2388	2369	2351	2335	2321	2310	2303	2311	
20	2398	2404	2410	2414	2415	2415	2418	2418	2397	2346	2286	2222	2160	2108	2068	2039	2022	2018	2022	
25	2279	2281	2278	2269	2259	2244	2215	2171	2109	2041	1984	1880	1791	1719	1665	1629	1612	1613	1611	
30	2158	2153	2136	2112	2081	2017	1926	1816	1710	1609	1524	1453	1370	1282	1217	1177	1160	1165	1159	
35	1776	1779	1781	1782	1752	1685	1583	1434	1295	1172	1070	986	920	848	780	736	717	724	718	
40	1388	1385	1382	1365	1311	1228	1126	1012	895	773	662	578	510	459	408	373	358	363	360	
45	998	990	981	945	890	820	732	634	537	437	347	289	248	217	197	179	172	175	174	
50	727	716	694	641	570	488	407	346	285	228	181	147	128	114	106	99.1	96.0	97.9	97.5	
55	460	456	444	412	366	309	242	182	140	121	101	85.7	74.6	67.6	63.2	60.6	58.8	60.1	60.2	
60	195	199	204	202	190	168	137	109	87.9	72.1	60.9	54.0	48.2	43.8	41.3	40.2	39.3	40.0	40.1	
65	139	134	125	112	95.8	79.9	66.7	61.0	53.8	46.7	40.8	36.3	33.0	30.7	29.2	28.4	28.1	28.4	28.6	
70	87.2	84.3	80.0	72.5	63.1	53.9	46.0	39.5	34.0	29.7	27.3	25.3	23.5	22.1	21.2	20.7	20.7	20.8	21.1	
75	35.7	35.7	35.8	35.2	33.6	31.0	28.4	25.6	22.9	20.5	18.7	17.4	16.5	15.5	15.1	14.7	14.7	14.9	15.0	
80	0.26	1.01	2.17	3.61	5.21	6.83	8.50	10.1	11.7	12.6	11.6	10.7	10.0	9.56	9.08	8.92	8.88	9.15	9.22	
85	0.00	0.00	0.00	0.00	0.00	0.00	0.00	0.00	0.00	0.00	0.00	0.00	0.00	1.90	3.38	3.40	3.23	3.19	3.58	3.52
90	0.00	0.00	0.00	0.00	0.00	0.00	0.00	0.00	0.00	0.00	0.00	0.00	0.00	0.00	0.00	0.00	0.00	0.00	0.13	0.00

C Range: 0 - 360DEG
 C Interval: 5.0DEG
 Test Speed: HIGH
 Temperature:25.3DEG
 Operators:
 Test Date:2015-06-18

y Range: 0 - 90DEG
 y Interval: 0.5DEG
 Test System:EVERFINE GO-2000B_V1 SYSTEM V2.0.287
 Humidity:65.0%
 Test Distance:8.000m [K=1.0000]
 Remarks:

LUMINOUS DISTRIBUTION INTENSITY DATA

Test:U:223.3V I:2.211A P:487.0W PF:0.9850 Lamp Flux:32423.5x1 lm		
NAME:TOWER CHANDELIER LIGHT	TYPE:OUTDOOR	WEIGHT:15
SPEC.:TI-GO3S-FL500W	DIM.:	SERIAL No.:
MFR.: TOMOMORI CO.,LTD	SUR.:	PROTECTION ANGLE:

Table--4

UNIT: ?0cd

C (DEG)\y (DEG)	285	290	295	300	305	310	315	320	325	330	335	340	345	350	355					
0	2458	2458	2458	2458	2458	2458	2458	2458	2458	2458	2458	2458	2458	2458	2458					
5	2473	2469	2464	2459	2455	2449	2443	2436	2430	2424	2418	2413	2409	2405	2402					
10	2484	2474	2463	2452	2440	2427	2415	2405	2394	2385	2375	2366	2358	2350	2344					
15	2496	2484	2469	2453	2436	2417	2396	2373	2349	2321	2293	2268	2246	2227	2216					
20	2363	2359	2358	2356	2350	2338	2293	2213	2132	2057	1991	1937	1894	1865	1849					
25	2206	2194	2175	2138	2081	2003	1924	1849	1782	1675	1583	1512	1455	1419	1405					
30	2044	2011	1946	1848	1728	1609	1494	1391	1303	1234	1153	1070	1007	973	961					
35	1677	1649	1580	1478	1357	1207	1079	967	868	787	722	653	591	557	546					
40	1264	1217	1137	1040	928	816	707	595	503	429	373	331	295	273	265					
45	848	798	734	661	578	492	407	326	260	217	187	166	154	143	139					
50	583	520	448	369	303	258	215	172	140	118	105	94.8	88.8	84.4	82.5					
55	367	329	283	231	179	138	109	94.7	81.8	72.0	64.2	58.7	55.1	53.3	51.9					
60	163	158	145	126	103	84.5	69.4	58.2	50.3	46.0	41.8	38.9	36.7	35.8	35.1					
65	99.0	86.6	73.3	62.1	52.1	48.0	43.0	38.4	34.2	30.9	28.6	27.0	26.0	25.2	24.9					
70	63.3	56.2	48.8	42.0	36.1	31.2	27.3	24.9	23.2	21.6	20.2	19.3	18.5	18.2	18.1					
75	28.9	27.8	26.4	24.3	22.2	19.8	17.9	16.3	15.2	14.3	13.6	12.9	12.6	12.4	12.2					
80	1.76	2.88	4.13	5.35	6.58	7.58	8.44	8.76	8.09	7.53	7.17	6.98	6.73	6.68	6.62					
85	0.00	0.00	0.00	0.00	0.00	0.00	0.00	0.00	0.00	0.00	0.00	0.91	1.09	1.20	1.39	1.20				
90	0.00	0.00	0.00	0.00	0.00	0.00	0.00	0.00	0.00	0.00	0.00	0.00	0.00	0.00	0.00					

C Range: 0 - 360DEG
 C Interval: 5.0DEG
 Test Speed: HIGH
 Temperature:25.3DEG
 Operators:
 Test Date:2015-06-18

y Range: 0 - 90DEG
 y Interval: 0.5DEG
 Test System:EVERFINE GO-2000B_V1 SYSTEM V2.0.287
 Humidity:65.0%
 Test Distance:8.000m [K=1.0000]
 Remarks: